

GEAR-DRIVEN DRAWWORKS

Bentec gear-driven drawworks are modular, lightweight, small-dimensioned, quiet and easy to maintain.

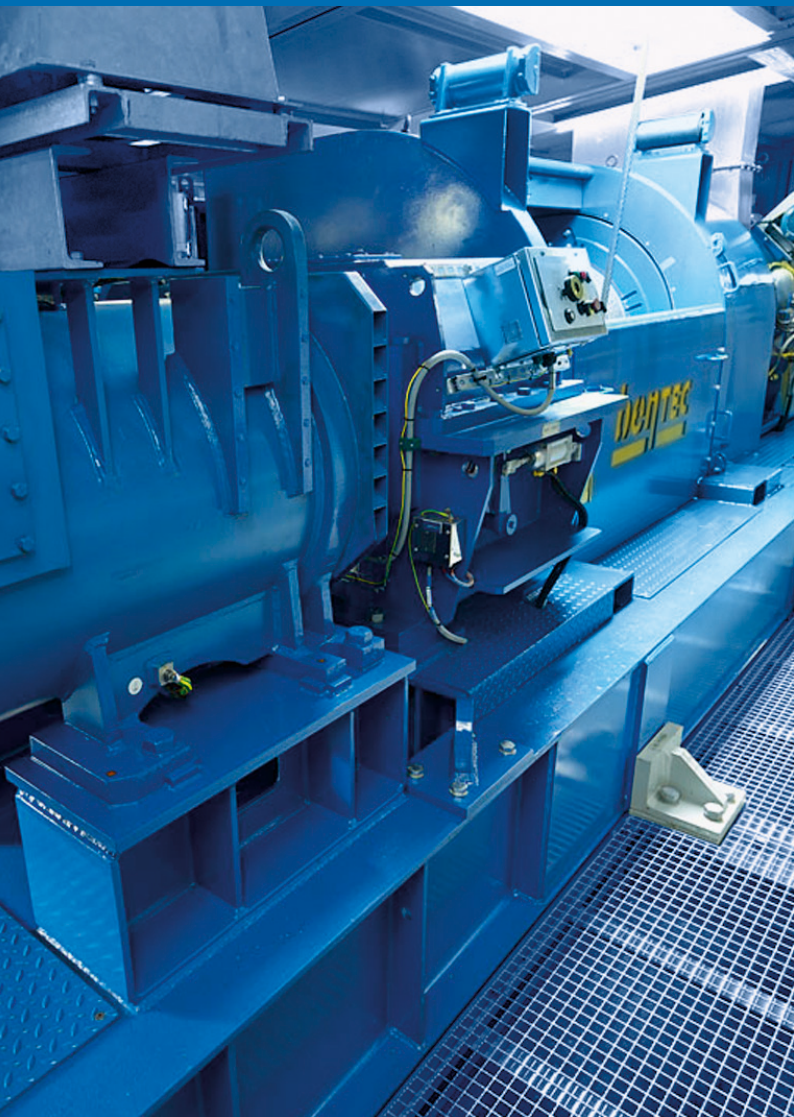
Suitable for onshore or offshore applications. Available with Bentec Feed-Off Control System.

GEAR-DRIVEN DRAWWORKS GENERAL FEATURES

- Control system for safe operation
- Temperature-controlled blowers reduce noise level
- No hydraulics
- No water
- Air-operated spring set disc brake (failsafe)
- Local control panel for safe cut and slip operation
- Components manufactured according to API 7K
- Climate range: -40°C to +55°C
- Suitable for artic & desert environment
- Suitable for onshore or offshore rigs
- CE conformity
- ATEX conformity on request

AVAILABLE CAPACITIES:

1 000 hp – 3000 hp



UNIQUE FEATURES

TWO-SPEED DRAWWORKS

- Air-cooled eddy current brake

SINGLE-SPEED DRAWWORKS

- No eddy current brake
- Single-speed gearbox for small footprint and reduced weight

TECHNICAL DATA

GEAR-DRIVEN DRAWWORKS

The Bentec GEAR-DRIVEN DRAWWORKS were developed to provide the market with more reliable technology and more hoisting performance. Their light weight and small dimensions make them ideal for frequent rig moves or limited offshore crane capacity. Due to our decades of experience in designing and manufacturing drilling equipment, the Bentec GEAR-DRIVEN DRAWWORKS are equipped with modern AC or DC motor technology developed in-house.

Bentec also reduces the number of sensors to a useful level. The Bentec GEAR-DRIVEN DRAWWORKS need only electrical power and air. No water or hydraulics are necessary, which simplifies the drawworks significantly. Bentec provides many drawworks solutions to meet our customers' requirements for rigs, whether existing or newly built.

All of these advantages make the Bentec GEAR-DRIVEN DRAWWORKS the best choice. A drawworks is just a winch – but equipped with modern and reliable technology, it offers the best performance.

TECHNICAL DATA TWO-SPEED

Model:	E-1250-AC	E-1250-DC	E-1500-AC	E-1500-DC	E-2000-AC	E-2000-DC	E-3000-AC
Power rating in hp (kW):	1 250 (920)	1 250 (920)	1 500 (1 100)	1 500 (1 100)	2 000 (1 470)	2 000 (1 470)	3 000 (2 200)
Max. hook load:							
8 lines in lbs (t)	540 000 (245)	540 000 (245)	626 000 (284)	600 000 (272)			
10 lines in lbs (t)	668 000 (303)	668 000 (303)	776 000 (352)	740 000 (336)	926 000 (420)	840 000 (381)	
12 lines in lbs (t)			922 000 (418)	882 000 (400)	1 102 000 (500)	1 000 000 (453)	1 526 000 (692)
14 lines in lbs (t)					1 274 000 (578)	1 153 000 (523)	1 762 000 (799)
16 lines in lbs (t)							1 995 000 (904)
Wireline size in inches (mm):	1 1/4 (32)	1 1/4 (32)	1 3/8 (35)	1 3/8 (35)	1 1/2 (38)	1 1/2 (38)	1 3/4 (45)
Max. wireline speed in ft/s (m/s)	51.8 (15.8)	51.8 (15.8)	59 (18)	59 (18)	59.6 (18.2)	59 (18)	58 (17.7)
Hoisting drum size in inches (mm):	29 1/2 x 67 1/2 (750 x 1 716)	29 1/2 x 67 1/2 (750 x 1 716)	33 3/8 x 71 3/4 (846 x 1 824)	33 3/8 x 71 3/4 (846 x 1 824)	33 3/8 x 71 3/4 (846 x 1 824)	33 3/8 x 71 3/4 (846 x 1 824)	39 x 71 3/4 (990 x 1 824)
Disc brake:	2-plate 48"	2-plate 48"	3-plate 48"	3-plate 48"	3-plate 48"	3-plate 48"	4-plate 60"
Electromagnetic brake:	EB-5032 Air cooled	EB-5032 Air cooled	EB-6032 Air cooled	EB-6032 Air cooled	EB-6032 Air cooled	EB-6032 Air cooled	EB-6032 Air cooled
Hoisting speeds:	2	2	2	2	2	2	2
Length in inches (mm):	283 (7 190)	286 (7 263)	305.3 (7 754)	307.7 (7 816)	306.5 (7 785)	301.2 (7 650)	338.6 (8 600)
Width in inches (mm):	117.5 (2 985)	117.5 (2 985)	117.5 (2 985)	117.5 (2 985)	117.5 (2 985)	117.5 (2 985)	125.5 (3 187)
Height in inches (mm):	96.5 (2 450)	99.4 (2 524)	98.9 (2 512)	114.9 (2 918)	115 (2 921)	108.3 (2 750)	114.9 (2 918)
Weight in lbs (t):	83 776 (38)	83 776 (38)	92 594 (42)	92 594 (42)	94 800 (43)	99 200 (45)	132 277 (60)

TECHNICAL DATA SINGLE-SPEED

Model:	E-200-AC-SG	E-250-AC-SG	E-300-AC-SG	E-350-AC-SG	E-450-AC-SG
Power rating in hp (kW):	1 000 (735)	1 250 (920)	1 250 (920)	1 500 (1 100)	2 000 (1 470)
Max. hook load:					
8 lines in lbs (t)	357 150 (162)	445 300 (202)	533 500 (242)	566 600 (257)	
10 lines in lbs (t)	440 925 (200)	551 200 (250)	661 400 (300)	701 100 (318)	831 100 (377)
12 lines in lbs (t)				833 400 (378)	1 000 900 (454)
14 lines in lbs (t)					1 155 200 (524)
Wireline size in inches (mm):	1 1/8 (28)	1 1/4 (32)	1 1/4 (32)	1 3/8 (35)	1 1/2 (38)
Max. wireline speed in ft/s (m/s):	40.5 (12.4)	40.9 (12.5)	40.9 (12.5)	46.2 (14.1)	46.6 (14.2)
Hoisting drum size in inches (mm):	29 1/2 x 67 1/2 (750 x 1 716)	29 1/2 x 67 1/2 (750 x 1 716)	29 1/2 x 67 1/2 (750 x 1 716)	33 3/8 x 71 3/4 (846 x 1 824)	33 3/8 x 71 3/4 (846 x 1 824)
Disc brake:	2-plate 48"	2-plate 48"	2-plate 48"	3-plate 48"	3-plate 48"
Electromagnetic brake:	none	none	none	none	none
Hoisting speeds:	1	1	1	1	1
Length in inches (mm):	218.3 (5 546)	219.4 (5 573)	219.4 (5 573)	220.5 (5 600)	234.4 (5 953)
Width in inches (mm):	114.2 (2 900)	114.2 (2 900)	114.2 (2 900)	114.2 (2 900)	117.5 (2 985)
Height in inches (mm):	95.7 (2 431)	105.7 (2 684)	105.7 (2 684)	108.7 (2 761)	114.9 (2 918)
Weight in lbs (t):	63 934 (29)	66 140 (30)	66 140 (30)	70 548 (32)	77 162 (35)