

PTT 0.38-50-0.14 TYPE CURRENT-LIMITING REACTORS

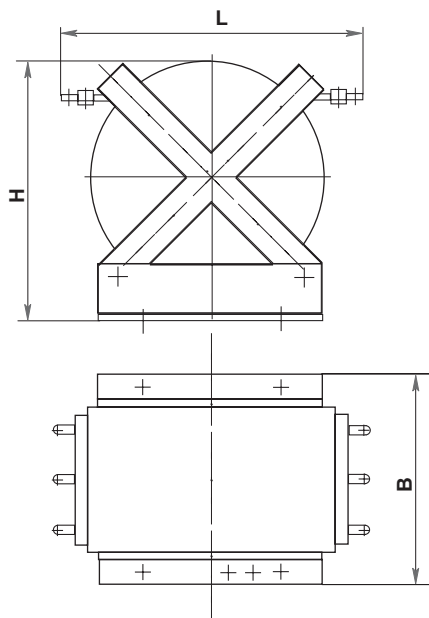
Current-limiting reactors are designed to limit short-circuit currents in 50 and 60 Hz power networks, they also may be used as a ballast inductive resistors in thyristor converter circuits.

The reactors are intended for operation in closed premises, under moderate and tropical climatic conditions.

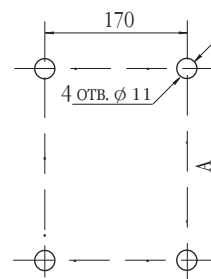
A reactor comprises three two-layer disc coils fixed in plastic spiders tightened with studs.

Parameter denomination	Normal value
Rated current, A	50
Rated voltage, kV	0.38
Rated inductive resistance, Ω at 50 Hz at 60 Hz	0.14+0.04 0.17+0.04
Dynamic stability, kA	3.2
Thermal stability current, kA time, s	1.25 3
Nominal losses, kW	0.15+0.02

OVERALL, MOUNTING DIMENSIONS AND MASS



Layout of holes for fixing a reactor



Type	B	L	H	A	Mass, kg
PTT-0.38-50-0.14Y3	270	410	325	230	18.5
PTT-0.38-50-0.14T3	240	375	310	200	31