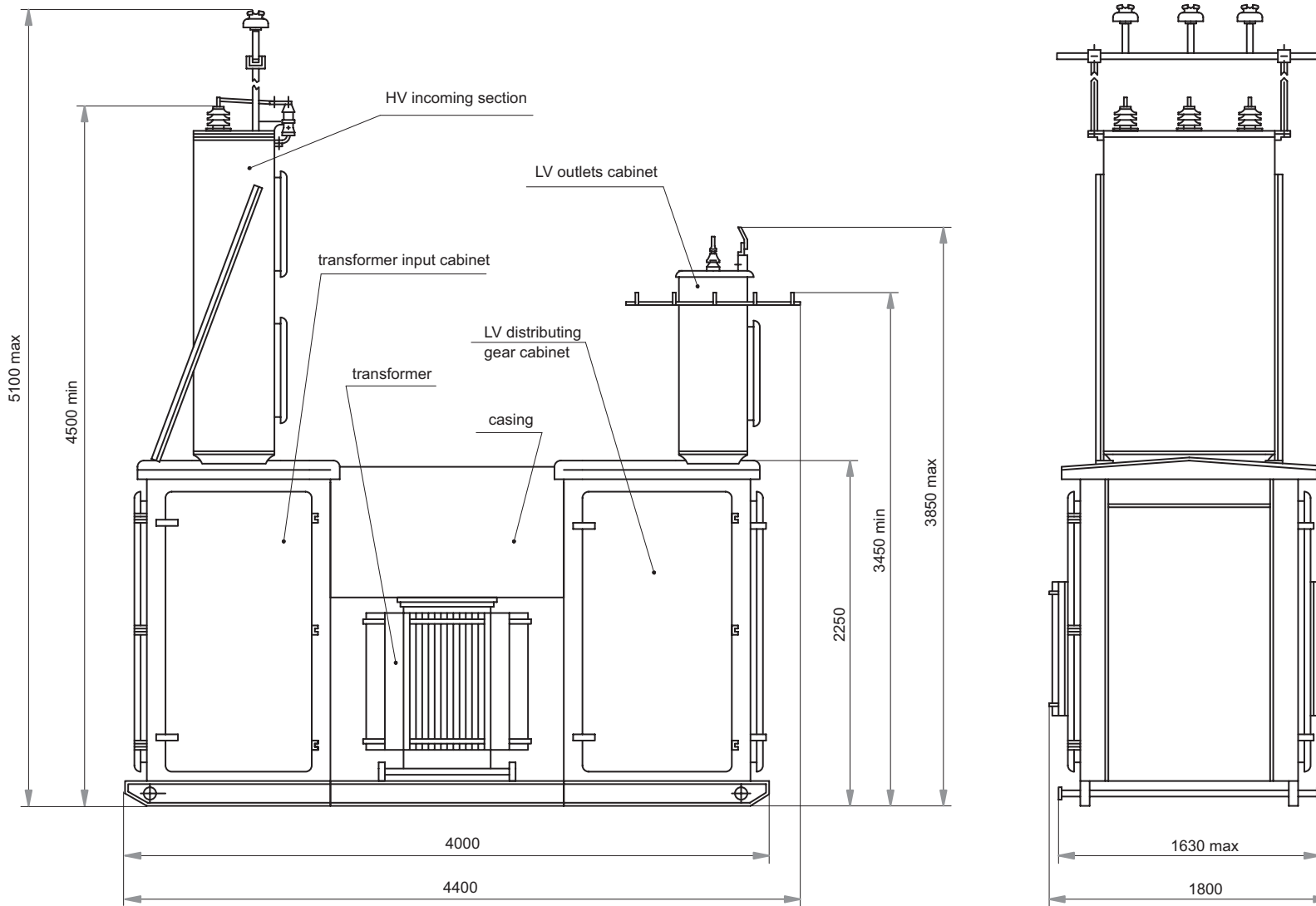


KTII UNITIZED TRANSFORMER SUBSTATIONS OF TERMINAL TYPE (KTII T) rating 630 and 1000 kV·A, with a voltage 6(10) kV

Unitized transformer substations are intended to receive electric energy of 6 (10) kV, to convert it and to distribute at 0.4 kV voltage. KTII is designed for energy supply of separate populated localities and industrial units in moderate climatic conditions (from - 45°C to +40°C).

HV leading-in is of air (overhead) or of cable type, 0.4 kV outlets are of cable or of air/cable type. KTII outgoing lines are fitted with stationary automatic circuit-breakers. Circuit design provides metering of active and reactive energy, it also provides heating function to establish and maintain normal operating conditions for low-voltage switchgear. Circuit design allows installation of a protective gas device and of a filled-system thermometer (as per customer's demand). KTII has exterior lighting feeder with automatic ON/OFF function. KTII is equipped with electrical and mechanical interlocking ensuring safety of attending personnel. Number of outgoing lines and current thereof can vary - as per customer's demand. Connection/vector group of a transformer - Yyn-0, Dyn-11.

Feeder №	Rated current of outgoing lines	
	630 kV·A	1000 kV·A
No 1	160	
No 2	250	
No 3	100	
No 4	160	
No 5	100	
No 6	100	
No 7	250	630
No 8	250	
No 9	320	
No 10	250	400
lighting line	25	



**Terminal type unitized transformer substations rating 630, 1000 kVA
with stationary circuit-breakers of 0.4 kV voltage**